



# Mornington Peninsula Trail

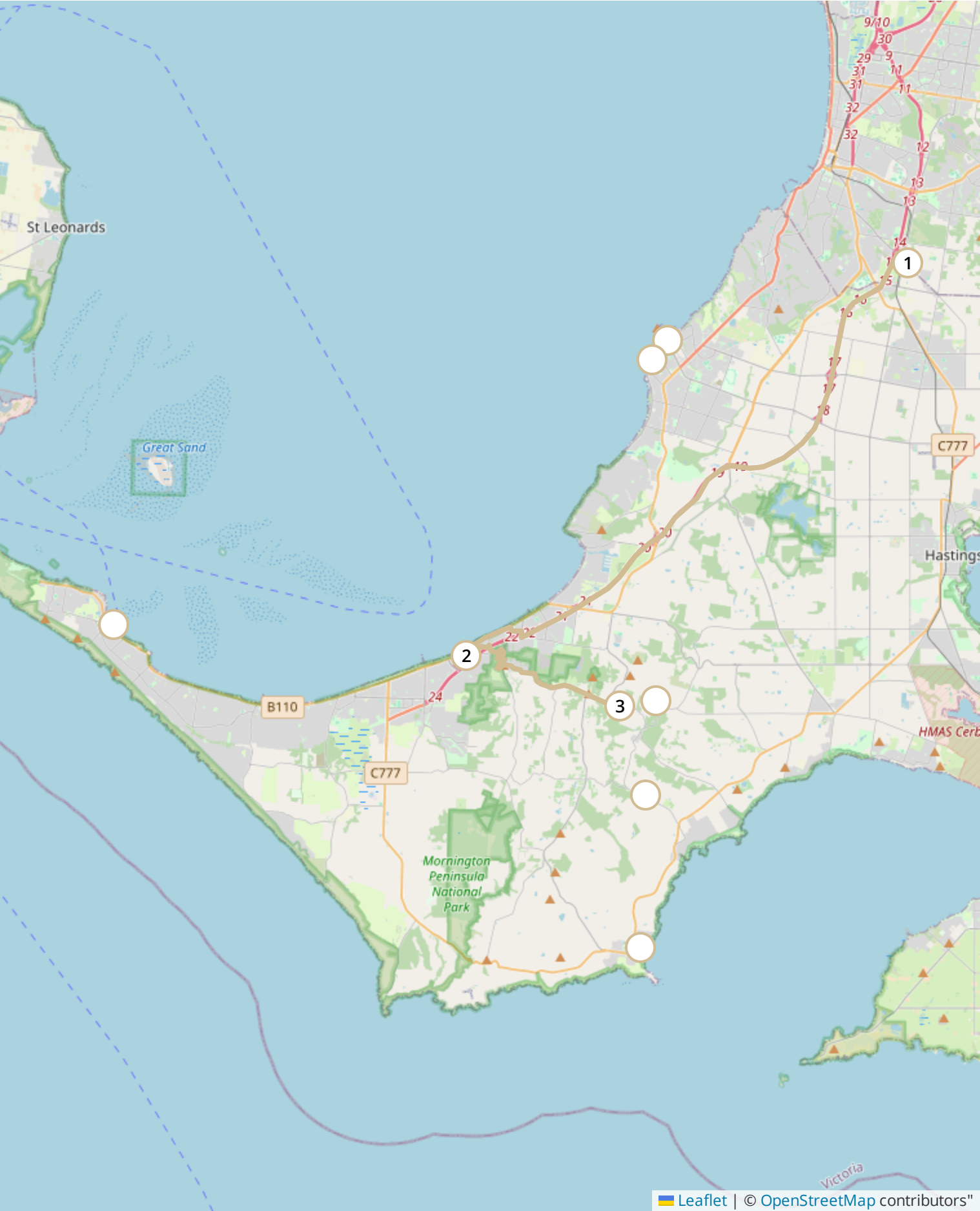


## Details

The Mornington Peninsula has long been a favourite destination for coastal holidays and cosy winter escapes. From stunning beaches and lively exhibitions and cultural attractions to an array of places to eat and drink there is much to see and do. Among the treasure trove of cultural sites, the National Trust of Australia (Victoria) proudly preserves and showcases several remarkable properties that allow visitors to step back in time and explore our shared heritage.



Mornington Peninsula Trail



# 1 Mulberry Hill National Trust

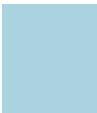
Explore the Home of Artist Sir Daryl and Joan Lindsay, author of Picnic at Hanging Rock.





## 2 McCrae Homestead

McCrae Homestead is one of Victoria's oldest homesteads. Discover galleries which showcase the McCrae's art, memorabilia and the photography, artefacts and objects from the Burrell-Twycross family.



 Leaflet | © OpenStreetMap contributors



Arrive via Car from **Mulberry Hill National Trust**  
31.3 km / 19.5 mi - 22 minutes



### 3 Endeavour Fern Gully

Rich in flora, fauna and habitat diversity, Endeavour Fern Gully is Mornington Peninsula's original rain forest. Experience the original natural environment of the Mornington Peninsula through a 2km loop walking track.



 Leaflet | © OpenStreetMap contributors



Arrive via Car from McCrae Homestead  
10.8 km / 6.72 mi - 12 minutes



4 **Sailor's Whisk**

Built in c.1910, Sailors Whisk is a seaside-blue-hued cottage, tucked down a gravel road lined with bushland & coastal tea tree, the cottage is surrounded by an indigenous garden and is around the corner from never-ending views across Western Port Bay to Bass Strait.



 Leaflet | © OpenStreetMap contributors

## 5 Polperro Farmhouse

Nestled in amongst its lush Victorian landscape in Red Hill, Polperro Farmhouse is a celebration of the iconic Australian 1950's holiday home, conjuring a familiar sense of nostalgia.



 Leaflet | © OpenStreetMap contributors

## 6 Sorrento Hotel

Standing proudly on the Sorrento clifftops overlooking the sparkling waters of Port Philip Bay, Hotel Sorrento combines modern luxury with old-world charm.

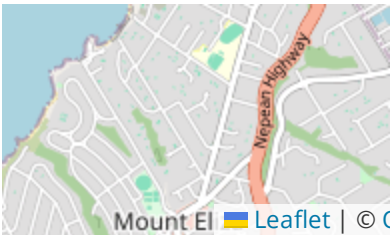


 Leaflet | © OpenStreetMap contributors



## 7 Bay Hotel Mornington

The Bay Hotel is a place to discover the untold stories of Mornington's rich heritage. Set in the former Commercial Bank building on the main street – fully restored to all its 1889 glory – this heritage building is a unique piece of history to grab a bite to eat.



## 8 Montalto Vineyard & Olive Grove

Experience a moment out of the ordinary at Montalto Winery which showcases a seasonal celebration of their estate-grown heirloom produce, alongside the very best locally sourced ingredients from across the Mornington Peninsula.



 Leaflet | © OpenStreetMap contributors"

33 Shoreham Road, Red Hill South, Australia

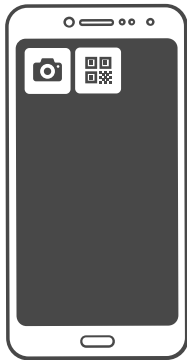
## 9 Lilo Café

Lilo Cafe sits on the esplanade opposite Fishermans Beach and offers a menu showcasing Mornington Peninsula produce. The quirky cafe is littered with retro knick-knacks and ornaments in a striking green fit-out.



 Leaflet | © OpenStreetMap contributors"

## Using QR Codes



Open your Camera App or download a QR reader



Point your camera at the QR Code which will launch the correct app



Access websites and features such as maps and directions

## Optional Downloads



### GPX File

For use in apps such as GPS Navigation and wearable devices



### KML File

For use in offline mapping products, such as maps.me and Google Maps



### PDF File

A link to this document



### Build your own itineraries

Alpaca provides a way for you to build your own itineraries. Visit <https://alpaca.travel>

### Terms of Service and Attribution

Copyright Alpaca.travel, Mapbox.com and OpenStreetMaps [openstreetmaps.com](https://openstreetmaps.com).  
Terms of Service <https://alpaca.travel/terms>