



# Wild West Coast



 Source: Zoe Manderson

## Details

 DISTANCE DRIVEN - 500km

 DISTANCE HIKED - 40km

 CAVES EXPLORED - 2

 BOAT TRIPS - 3

A road trip showcasing Tasmania's World Heritage wilderness and wild untamed west coast.

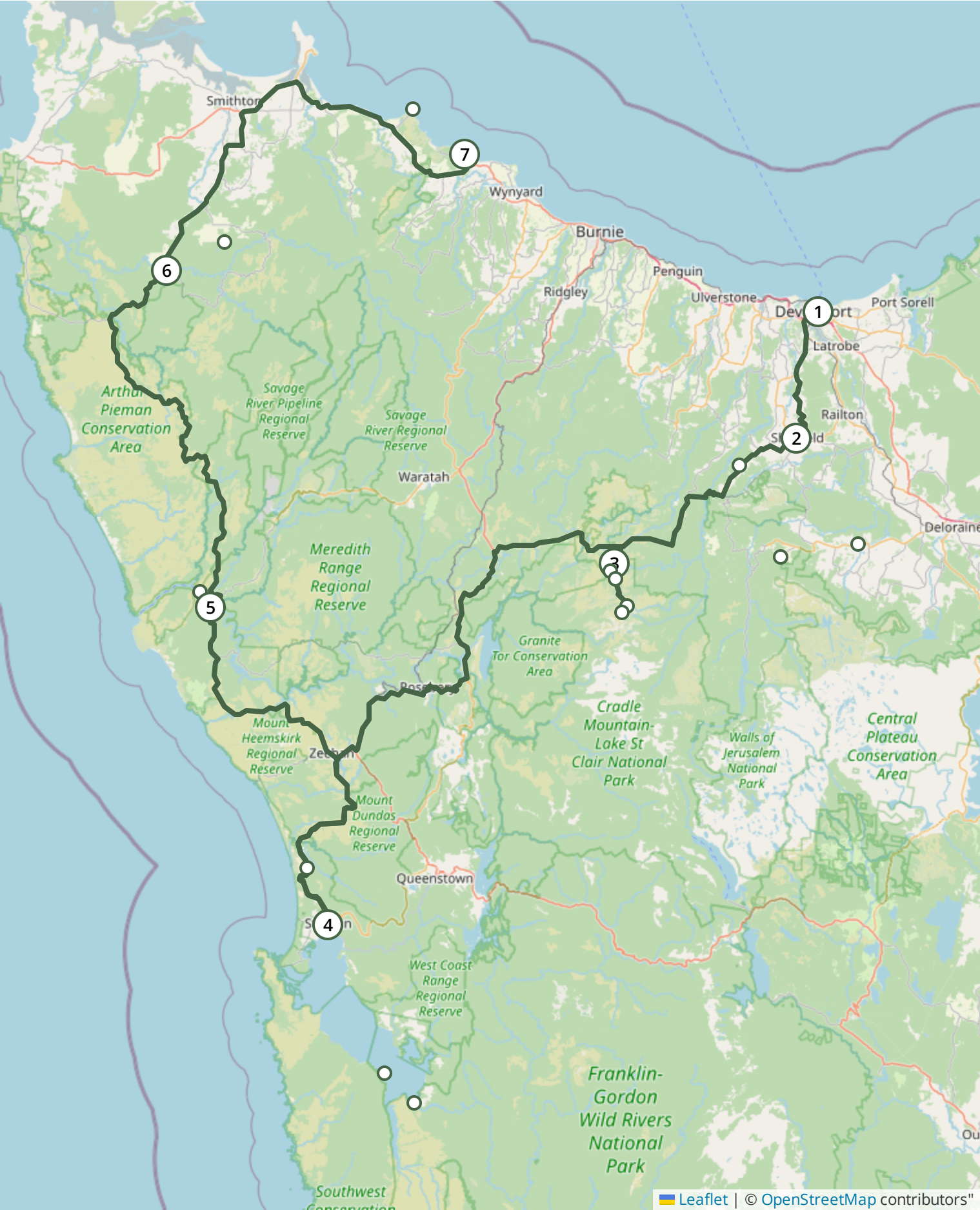
This itinerary is a family friendly trip for hiking enthusiasts and nature lovers. In this unique part of the world you will experience ancient temperate rainforests, glacial valleys, alpine heath, remote rivers, limestone caves

Wild West Coast

and rugged coasts.

Depending on your pace, you can do this itinerary in 8 days for an action-packed trip, or 10 days with some slower paced days included.







1 Devonport

Arrive on the Apple Isle ready for adventure.



Source: Zoe Manderson

If you arrive from an overnight sail, then you're ready for a full day of activities. If you've come over on the day sail, then you will want to find accommodation in Devonport or surrounds for when you arrive.



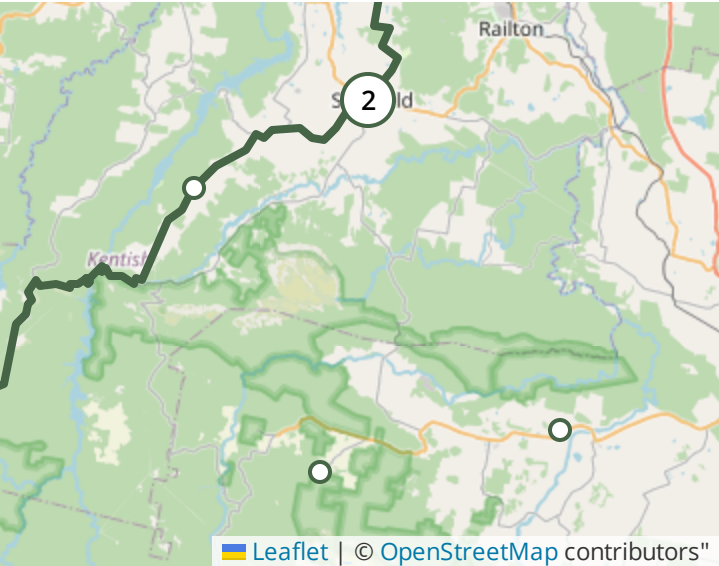
2

# Sheffield

With over 140 murals, this is Tasmania's largest outdoor gallery.



Source: Zoe Manderson



Arrive via Car from **Devonport**  
29.2 km / 18.1 mi - 26 minutes



OPEN IN MOBILE

## Sights & Activities



### Tazmazia and the Village of Lower Crackpot

Get lost in the world's largest maze complex.



GET DIRECTIONS

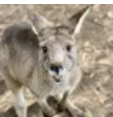


### Marakoopa Cave

A journey into a limestone cave with underground rivers, flowstone, stalactites and glow worms.



GET DIRECTIONS



### Trowunna Wildlife Park

A private sanctuary focused on rehabilitating injured wombats and breeding the tassie devil.



GET DIRECTIONS

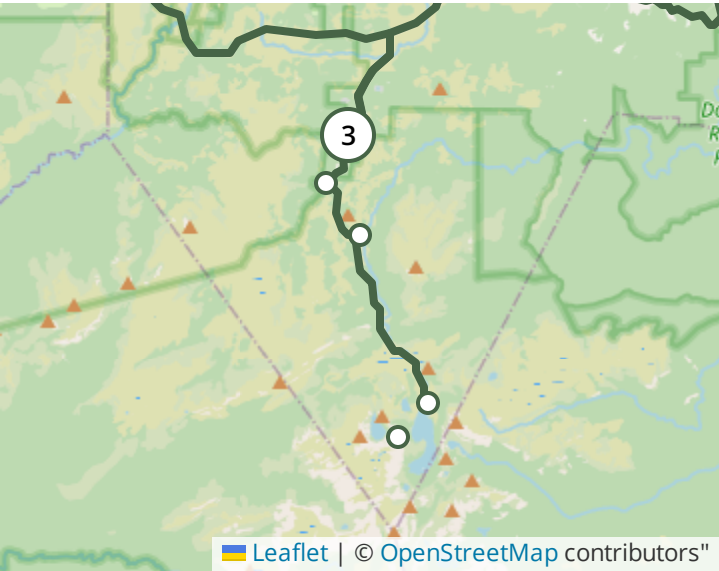
3

# Cradle Mountain

This World Heritage Area is where ancient rainforests meet glacial lakes.



Source: Zoe Manderson



Arrive via Car from **Sheffield**  
54.3 km / 33.7 mi - 47 minutes



GET DIRECTIONS



OPEN IN MOBILE

Despite its fame and popularity, it is still possible to visit Cradle Mountain and feel like you're in remote wilderness.

## Sights & Activities



### Cradle Valley Boardwalk

A 5km boardwalk trail that meanders up the valley through vibrant button grasses and giant gums.



GET DIRECTIONS



### Dove Lake Circuit

The quintessential Cradle Mountain experience - a spectacular family friendly 6km walk.



GET DIRECTIONS



### Marions Lookout Hike

A 10km hike through ancient forests and past glacial lakes.



GET DIRECTIONS



### Tavern Bar & Bistro

A cosy spot to fuel up after a hike. Get a seat by the window for wildlife spotting while you eat.



GET DIRECTIONS

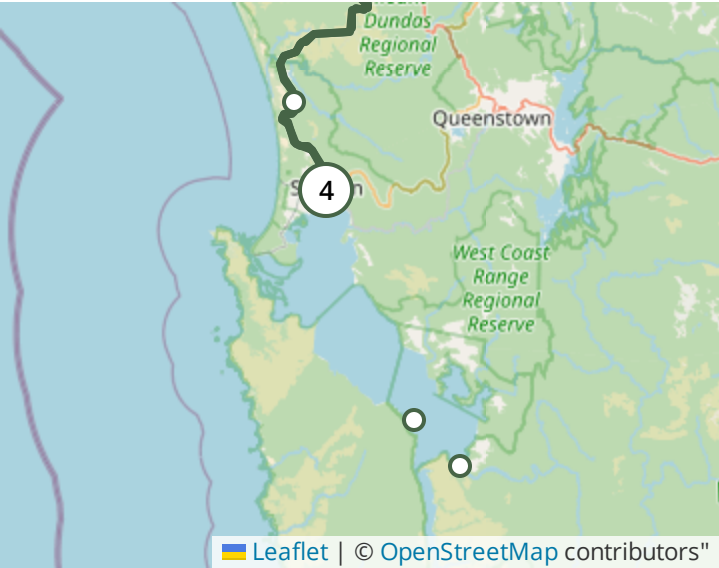
4


# Strahan

A harbour-side village surrounded by World Heritage Wilderness.



Source: Zoe Manderson





Arrive via Car from **Cradle Mountain**  
139 km / 86.3 mi - 1 hour 37 minutes



## Sights & Activities



### Gordon River Cruise

Glide silently up the Gordon River on this half day cruise.



### Sarah Island

Venture forth to the enigmatic Sarah Island, a hauntingly beautiful destination nestled within the pristine wilderness of Tasmania.



### Henty Dune

Embrace the thrill of an afternoon tobogganing at Henty Dune.





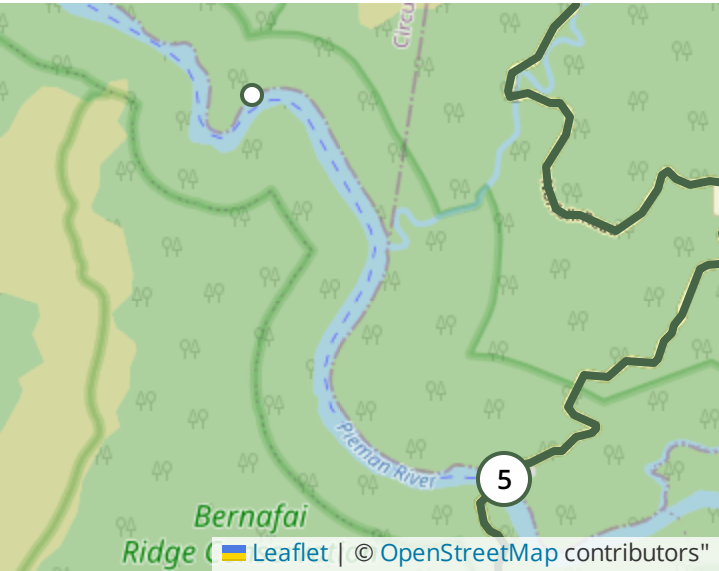
5


# Corinna

The gateway to The Tarkine, and a base for nature based explorations on lake and water.



 Source: Zoe Manderson





Arrive via Car from **Strahan**  
93.2 km / 57.9 mi - 1 hour 13 minutes



## Sights & Activities



**Lover's Falls**  
A 4km kayak down the Pieman River leads you to a hidden wooden staircase.





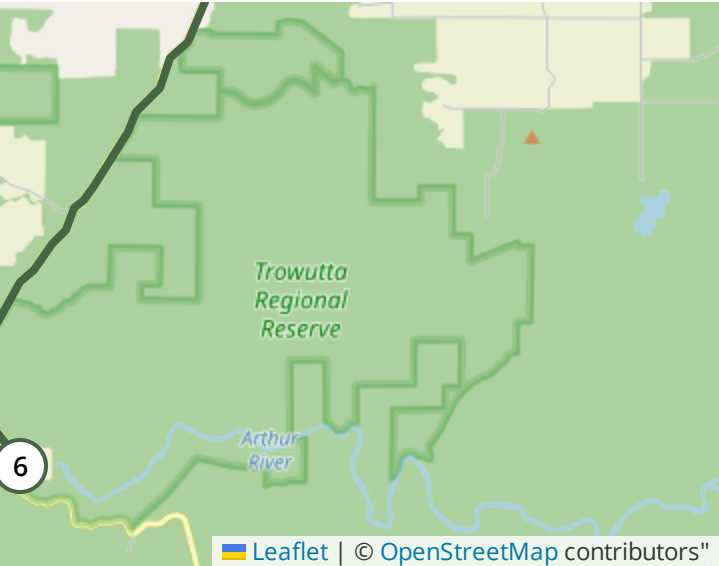
6


# Arthur River

As you cross the bridge, don't miss the view up the river.



Source: Zoe Manderson





Arrive via Car from **Corinna**  
95.5 km / 59.3 mi - 1 hour 20 minutes



## Sights & Activities



### Trowutta Arch

A short ferny walk leads you to this partially collapsed cave and sink hole.



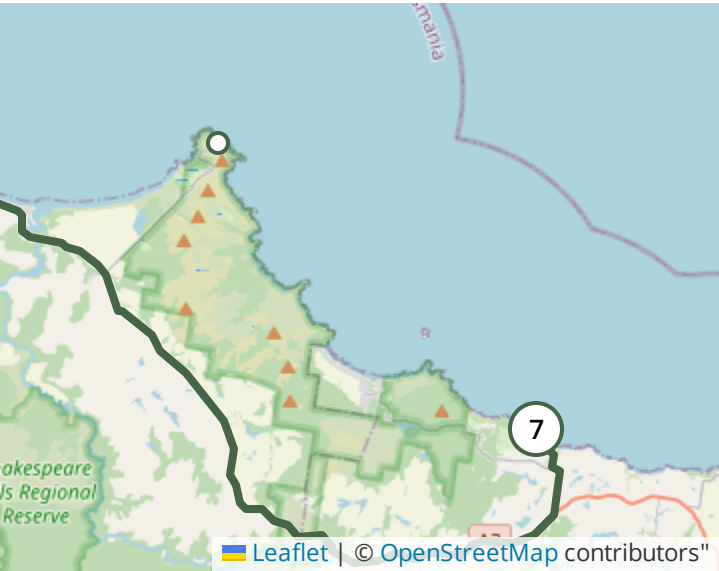
7


# Boat Harbour

White sand and turquoise water are a surprising sight as you descend the road into Boat Harbour.



 Source: Zoe Manderson





Arrive via Car from **Arthur River**  
91.7 km / 57 mi - 1 hour 6 minutes



## Sights & Activities

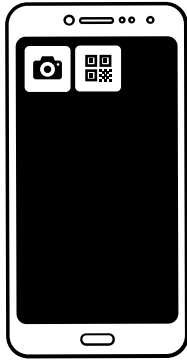


### Rocky Cape National Park

Take in the views from the Lighthouse, or amble down the short North Cave Track.



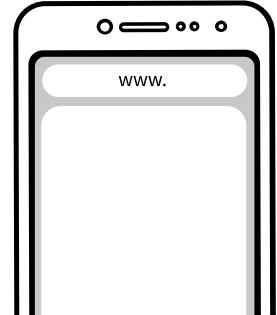
# Using QR Codes



Open your Camera App or download a QR reader



Point your camera at the QR Code which will launch the correct app



Access websites and features such as maps and directions

## Optional Downloads



### GPX File

For use in apps such as GPS Navigation and wearable devices



### KML File

For use in offline mapping products, such as maps.me and Google Maps



### PDF File

A link to this document



## Build your own itineraries

Alpaca provides a way for you to build your own itineraries. Visit <https://alpaca.travel>

## Terms of Service and Attribution

Copyright Alpaca.travel, Mapbox.com and OpenStreetMaps [openstreetmaps.com](https://openstreetmaps.com).  
Terms of Service <https://alpaca.travel/terms>